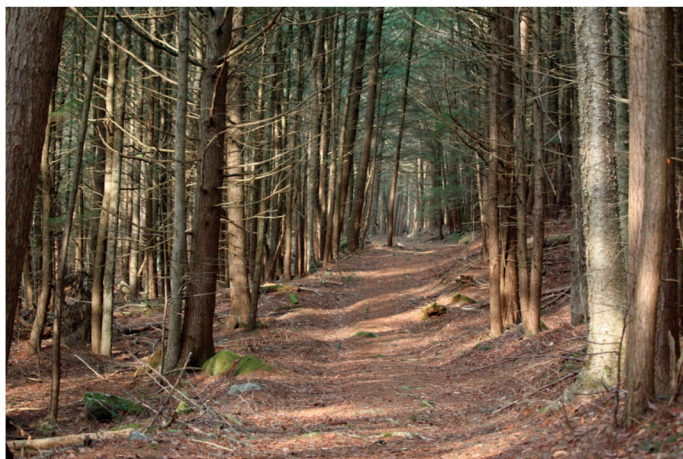


Conwell property - Hilltown Land Trust

The Conwell property is comprised of 70 acres of forestland in Worthington along Route 112, and includes a small pond, the top of Eagle Nest Ridge, and 0.5 miles of frontage along the Little River. There are about 3 miles of out-and-back trails for hiking. These trails will soon be expanded to create a longer loop trail, as HLT has recently conserved an adjacent 105 acres to the North.

Directions to parking area from Stonepool Pottery / Mark Shapiro's studio

1. At the end of the driveway, turn right onto Conwell Rd.
2. At the end of Conwell Rd., turn right onto Ireland St. (0.2 miles)
3. At the end of Ireland St, turn right at the stop sign onto Rte. 112 / Huntington Rd. (0.2 miles)
4. Drive ~ 0.5 miles to the parking area on the right-hand side of Rte. 112. Look for the break in the guardrail and a short, gravel driveway into the woods, just south of where the Little River passes under Rte. 112. Walking directions to the trailhead are on the kiosk in the parking area.



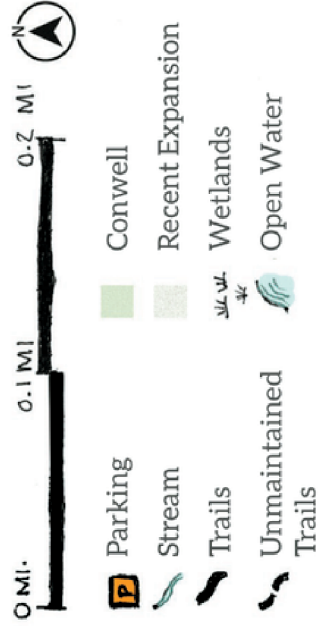


Conwell

Worthington, MA



Legend



Esoteric Guide

- 1 Mossy stream crossing
- 2 Big old white pine
- 3 Nice place to sit on the dam
- 4 Split-in-half tree
- 5 Rock tripe
- 6 Puffball mushrooms